

# Keep workers *safe* on the road.



## Why does workplace motor vehicle safety matter?

Millions of workers drive or ride in a vehicle as part of their jobs, and crashes are the leading cause of work-related deaths in the United States.

*Source: Bureau of Labor Statistics Table A-2, 2014*



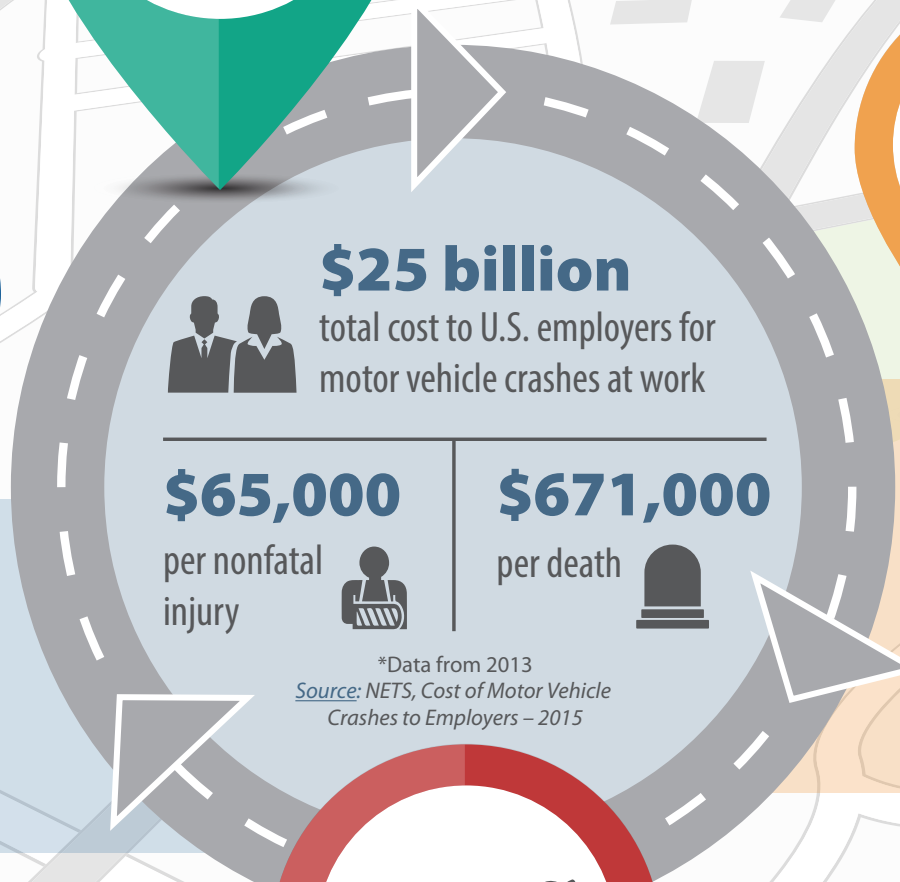
The goal of the **Center for Motor Vehicle Safety** is to make sure that those who work in or near vehicles come home safely at the end of their workday.



Motor vehicle crashes impact workers, their families, businesses, and communities.



All workers are at risk of crashes, whether they drive light or heavy vehicles, or whether driving is a main or incidental job duty.



## NIOSH Center for Motor Vehicle Safety

Learn how to keep your workers safe:  
[www.cdc.gov/niosh/motorvehicle](http://www.cdc.gov/niosh/motorvehicle)

@NIOSH\_MVSAFETY

From 2003-2014 there were **22,000** work-related motor vehicle **deaths** in the United States.

*Source: Bureau of Labor Statistics Table A-2, 2003-2014*

