



TEEG 2018 ANNUAL REPORT

A Grateful Heart

An Attitude of Gratitude

We at TEEG are grateful. Northeast Connecticut is widely known for its generosity and willingness to take care of others. The Quiet Corner is a special place where the connection to and support of our institutions, agencies, and traditions are the threads that hold our communities together. This is how TEEG has been able to continue serving our community for 31 years.

In this spirit, our 2018 Annual Report shares just a few of the countless examples of selfless giving that fill our hearts with gratitude. We hope reading them will give you insight into the work we do, and the many ways people give to TEEG.

As you read through *A Grateful Heart*, you will see that we serve so many people with a wide variety of programs and services. We hope you will join us in our work, knowing that we are grateful for each and every one of you, each and every day.

Dedication

We are happy to dedicate this year's Annual Report to two individuals who represent the foundation of the agency we are today.

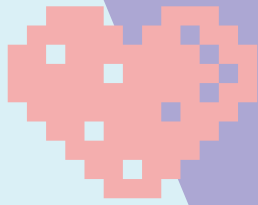


In 2009, as work began on our present building, John Rice stepped in to lend a hand. He soon became the unofficial "Clerk of the Works", volunteering countless hours to make sure the work was done right and on time. But John didn't stop there. When we opened the building, he became the unofficial "Head of Maintenance" repairing, upgrading, and maintaining the building. To this day John keeps our systems in tip-top shape and finds replacements when things are beyond repair. His sense of humor and genuine concern are what encourage us to keep going. For these and so many other reasons, we were happy to dedicate the TEEG building to John Rice in October 2018.



Donna Grant came to TEEG in 1998 as Youth Programs Manager. Never one to leave an issue unresolved or an individual struggling, she quickly rose through the ranks to take on the role of Executive Director. Shaping, coaxing, advocating and building, Donna moved the agency forward and grew programs to serve area residents in so many ways. She poured her passion into each project and defended those she served with vigor. Donna's concern for youth in our area was paramount. As the TEEG building took shape she saw the need for a space where mentors could meet with their mentees to relax, talk, and problem-solve. Our therapeutic garden provides shelter from the storms of everyday life. This special space was named in honor of Donna in October 2018.





An Emotion of Positive Motion

As I write this message, it is a sparkling late-summer day. The happy voices of children fill the halls here at TEEG. They are here with their families to take part in our annual "Back to School" program. With supplies generously donated by the community, volunteers help children to choose items needed to start the school year on the right foot, including vouchers to be used to purchase new pairs of shoes! Gratitude abounds for the supplies, for the volunteers, for the donations, and for the Thompson Lions who raised money for shoes.

Feeling gratitude and expressing it allows us all to experience the good in our lives. It is an emotion that helps propel us toward improved health, coping skills in the face of life's adversities, and strong, healthy relationships.

My role as TEEG's Executive Director allows me to see the benefits of feeling gratitude from both sides. People are as grateful for the opportunity to help as they are to receive the kindness of others.

In shaping the message and vision of this year's report, I knew that we would be able to include just a few tales of heroic giving. Please know that this only scratches the surface. There are so many more stories of people giving their time, talent and treasure that we need far more space than this book allows to share them all. Please join TEEG in our campaign to spread gratitude. Visit our new website and follow us on Facebook to be inspired by the daily acts of selflessness that fill our hearts with love.



Anne Miller

Lives Touched by TEEG Programs

| | |
|--|---------------|
| Early Childhood & Community Education | 1,490 |
| Focus on Family | |
| Hand in Hand | |
| Parent/Child Playgroup | |
| Diaper Assistance | |
| School Readiness | |
| Gamblers Anonymous | |
| Anger Aside | |
| Youth Services | 5,739 |
| All-Star Adventure Program (ASAP) | |
| Back to School | |
| Campership Program & MARS Scholarship | |
| Got Drama? | |
| Adolescent Therapeutic Support Services | |
| Juvenile Review Board (JRB) | |
| Scholarship | |
| Summer Breakfast & Lunch | |
| Community & Income Qualified Programs | 29,139 |
| Case Management and Budgeting | |
| Client Relief and Private Fund Fuel Assistance | |
| Clothing Assistance | |
| Community Garden and Nutrition Education | |
| Community Outreach | |
| Food Systems (Gleaning, Food Rescue, Hub) | |
| Holiday Giving | |
| Homelessness Support | |
| Information & Referral Consultation | |
| Monthly & Emergent Food Distribution | |
| Operation Fuel | |
| Private Fund Energy Assistance | |
| Salvation Army | |
| Volunteer Services & Giving Back | 2,245 |
| Community Service | |
| Volunteering Opportunities | |
| Senior Services | 8,400 |
| Benefits Counseling | |
| Pomfret Senior Center | |
| Senior Recreation AND Events | |
| Total times lives were touched the fiscal year 2017-2018 | 47,013 |
| Unduplicated Individuals | 2,131 |
| Unduplicated Families | 894 |

Our gratitude is deep

We are grateful to the caring individuals who saw a need and came together to make TEEG happen so many years ago...

We are grateful to the tireless staff who sought grant funding and skilled support to do the work that continues today...

We are grateful to the many volunteer board members who structured the agency to increase its reach and expand its network of support...

We are grateful to visionaries and dedicated worker bees who created the beautiful building we now occupy...

And more than anything, we at TEEG are grateful for the countless daily acts of kindness that inspire us to do what we do.



The TEEG Board of Directors

TEEG Board members are volunteers with deep commitment and dedication to our mission. It is a true working board that meets monthly to support the agency and its staff. They work to fundraise, guide, contribute and nurture the agency they love. They sit on committees and are often here at TEEG to volunteer. They are a regular and welcome presence in our building. Their thoughtfulness and deep understanding of TEEG and those we serve is invaluable.

Christopher Burke, Esq
President

Rene Comtois
Vice President

Mary Anne Fontaine
Secretary

Jo-Ann Chenail*
Treasurer

Mercedes Robbins
Asst. Treasurer

Kevin Shaw
Executive Officer

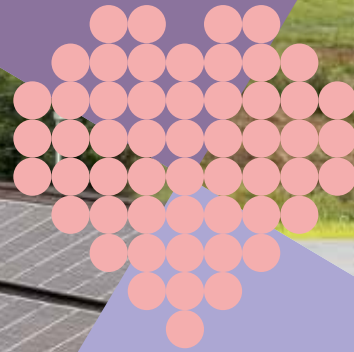
Amy Archambault
Denise Baum
Dr. Mary Cheyne
Larry Consiglio, Jr.
Eric Gould
Sandra Gould
Erica Groh
Mary Ellen Jones
Erica Kesselman, M.D.
Peter Lusa

Pam Olson
Heather O'Rourke
Linda Peiczarka
Barbara Pickett
Ted Reynolds
Jayne Robbins
Leslee Ruggeri
Dolores Werge
Taff Tschamler



A Truckload of Gratitude

TEEG needed a truck. When our old truck, purchased for \$1 from the Connecticut Food Bank, died we were missing out on opportunities to receive needed donations from local warehouses. A \$5,000 match challenge was offered by bankHometown, and we got to work spreading the word. Within an hour we had our first donor, Longmeadow Automotive. The outpouring of support that followed was humbling and soon we raised twice the matched amount, allowing us to purchase the perfect vehicle to suit our needs.



Powerful Generosity

Running a large building, complete with heat, lights, technology, and refrigeration that includes a walk-in freezer and cooler is expensive. While we do our best to conserve, the monthly electric bill was often staggering. Enter Charlie Weedon and Sue Devokaitis. They had a vision that would make us more energy efficient AND save money. Not only did they provide us with a solar array; they did the paperwork, the design, the contracts, and the many tasks that allowed us to step into full solar power production. Because of their thoughtful and knowledgeable generosity, we can power our work at an estimated savings of \$4,500 a year.

TEEG Staff (In alphabetical order)

Peg Bernat, HR/Fiscal Assistant/Benefits Counselor
Jason Bleau, Community Outreach Coordinator
Jill Bourbeau, Associate Case Management Coordinator
Jenn Carlson, Clinical Program Coordinator
Jo-Ann Chenail, Resource Developer
Jenni Fountain, Fiscal Administrator
Chelsea French, Community Programs, Outreach,
and Development Coordinator
Rachel Hilli, Front Desk Coordinator
Therese Horvath, Lead Case Management
Coordinator
Jim Jutras, Senior Center
Susan Kershaw-Sczuroski, Clinical Supervisor
Nadia Krivosheev, Program Assistant
Anne Miller, Executive Director
Catherine Smith, Program Assistant
Jennifer Strong, Community Programs Manager
(17/18)
Colin Whiston, Clinical Programs Manager (17/18)
Jibrael Younis, Resource Developer (17/18)

IAM Mentors

Elena Mercier
Therese Horvath
Elizabeth King
John O'Brien
Jenn Plaza
Loryn Walker
Jibrael Younis
Jill Bourbeau
Maryanne Coleda
Patty Sue Brown
Cameron Saracina
Sarah LeNoir
Jose Michael Gonzalez
Molly Ware
Colin Whiston

ASAP Staff

Douglas Henry
Therese Horvath
Sarah LeNoir
Autumn Lewis
Julie March
Haylee Olson
Jenn Plaza
Cameron Saracina
Colin Whiston
Elizabeth King
Isabel Rodriguez-Mendez
Molly Ware
Jeff Lee

Consultants

Dr. Andre Bessette, Child and
Adolescent Psychologist
Dr. Janice M. Gruendel, Senior Fellow
Institute for Child Success,
Yale University





Just like every modern organization, TEEG relies on technology to do our work. From our information database created by Phyllis Emigh of Quiet Corner Consulting, to email accounts, to our phone system, TEEG is wired. Enter Eric Gould of Savage Systems. Since 2005 Eric has provided our agency with his IT wisdom and support services. With a friendly voice on the phone, he dispatches techs to our door when we need them. Delivering service with a smile, Eric is an invaluable resource to TEEG.



Grand Gestures

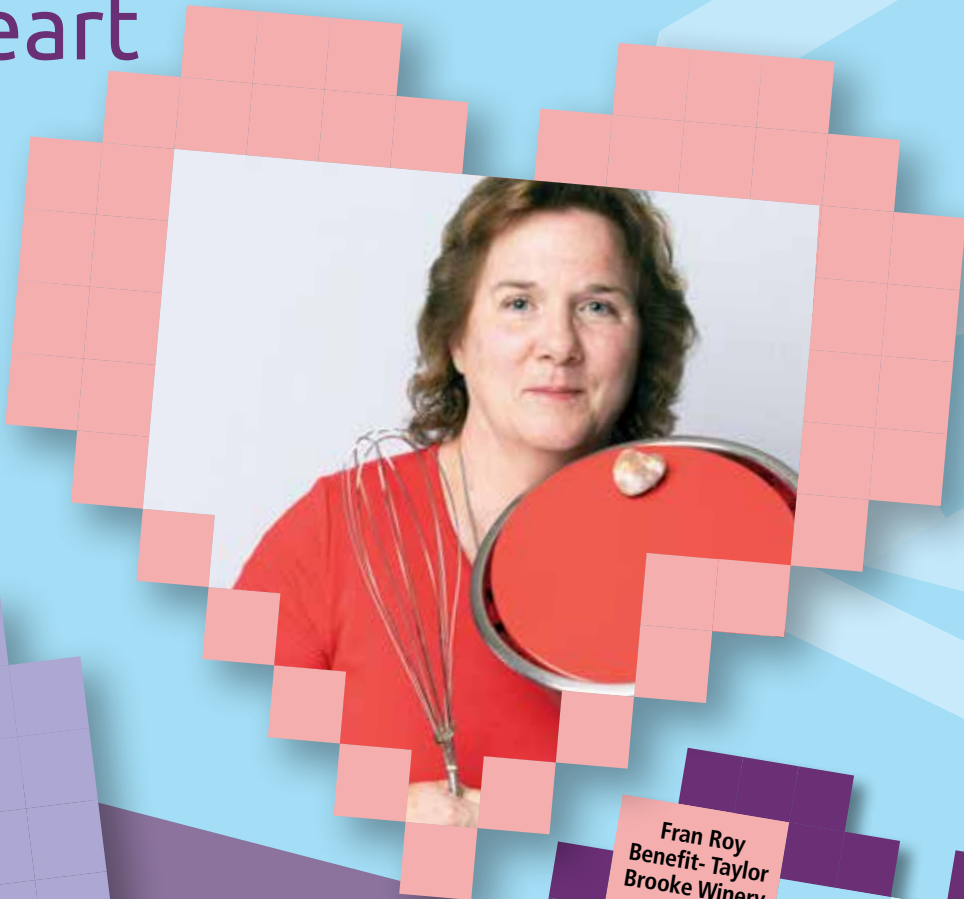
The ultimate kindness is to give something to get nothing in return. The TEEG Ambassadorship is a prime example of this. Bidding for this coveted title is competitive at our annual Have a Heart charity auction. What does the winner get? The chance to give more by carrying the TEEG message for others to follow throughout the coming year. For the last two years, Steve and Kathleen Herbert have stepped up with support and attended many TEEG community events. We are truly grateful for their generosity and friendship.

"We are honored to serve as Ambassadors to TEEG again this year. We are happy to be counted among the many volunteers and staff at TEEG who work so hard to provide services to those in need in our communities. Every year we look forward to participating in the Have a Heart auction and many of the other events TEEG sponsors. We encourage everyone to join us as a contributor or volunteer at TEEG." – Steve and Kathleen Hebert

Gifts from the Heart

TEEG volunteers Cindy Miller and Pat Blake are artisans of love. Cindy is a baker who creates beautifully decorated cupcakes and delivers them fresh to our food pantry on distribution days. She also teaches cake decorating as part of our Focus on Family community program and donates delicious gift certificates each year for our Have a Heart auction.

Pat is a magician with crochet needles. With her fingers always in motion, she creates mittens, hats, blankets, scarves, and sweaters that she gives to TEEG. Many hearts, hands, and heads have been warmed by Pat's kindness, especially ours!



Share the Love

Throughout the year, TEEG is the grateful beneficiary of community support at our annual events and "Pop Up" fundraisers organized and run for us by local groups and individuals. These events help us in so many ways. They provide monetary support, they build friendships, and they spread the word about TEEG. Thank you to everyone involved in all these endeavors for your generosity and kindness!

Fran Roy
Benefit- Taylor
Brooke Winery

Farm to Table -
Pomfret
Agricultural
Commission

Disney
Raffle

Open Mic
Night -
Vanilla Bean,
Elena Deluca

LuLa Roe

Killingly
Bike Night

Pomfret School -
Good Neighbor
Radio Hour,
Benefit Dance
Show, and
Benefit Concert

Savers/
Yard Sale

Niles Deary
Benefit -
Thompson House
of Pizza

Open Mic
Night -
Elision Sound
Studios

Car Wash-
Saveway



The Art of Gratitude

Woodstock Academy, like other schools in our service area, supports TEEG in many ways. Among the valuable gifts they share is the time and talent of students and staff members. Gloria Hanczar and the Arts Outreach Program have enlivened our Food Pantry with a fruitful mural to greet guests as they arrive to donate, organize, and receive food.



Open Arms to Help the Homeless

Homelessness is a complex issue in our corner of the state. Shelter space is a challenge, permanent housing for those who are homeless is hard to obtain, and requirements to access state programs are confusing. While solutions take many approaches, joining forces is a step in the right direction. This past March a group of concerned individuals representing many local agencies came together to form the TEEG Homelessness Charrette. A charrette is a meeting in which all stakeholders attempt to resolve conflicts and map out solutions, very much like the group that formed TEEG 31 years ago. The group serves to educate, inform and provide solutions to the unique issue of homelessness in our area of the state.

In 2017, over 114,000 individuals under the age of 18 experienced homelessness.*

* Project Home



Food for Thought

It's no secret that hunger can affect learning, brain development, and scholastic performance. Families facing food insecurity often struggle to find enough to eat when children are home on the weekends. With this in mind, TEEG approached organizations in the towns of Woodstock, Pomfret, and Thompson. Woodstock was the first program established with the Evangelical Covenant Church and F.R.E.S.H. providing weekly distribution to families. Soon after the Thompson Business Association stepped up to sponsor the program in their community. This fall, Christ Church and the Pomfret School will team up to support the program to serve families through the Pomfret Community School.

Each of these teams collects, organizes packages, and distributes food each week to families in the program by providing a bag of "kid-friendly" food each Friday. TEEG connects with families by inserting additional information about support services in the bags. The Woodstock team served up to 75 families a week last year and our data shows that those families are finding their way to TEEG, where they can access the tools they need to balance budgets and stabilize family income.

30% of all households in the towns we serve are struggling every day to make ends meet, even working a full time job.*

* United Way ALICE Report



A Garden of Abundance

The "Staff Fun Squad" at Crabtree & Evelyn in Woodstock was tasked to create a project that would unite employees as well as serve the community. Their solution? A garden of giving! Employees donated time, talent, and treasure to construct raised beds, plant seeds, and lovingly tend a garden to grow fresh vegetables just for TEEG. Taking time on their lunch breaks and after hours, they have fed our hearts and filled our pantry shelves with their generosity and spirit.

Healthy Hearts and Balanced Budgets

Keeping the agency budget balanced requires close monitoring. A lean budgetary diet and plenty of check-ups, along with careful planning assure that we will remain healthy for years to come, despite uncertainty caused by state and federal budgets.

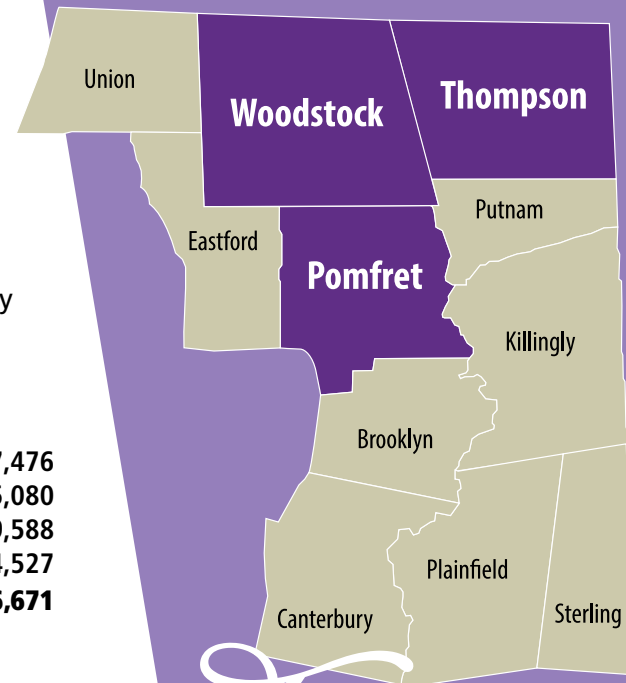
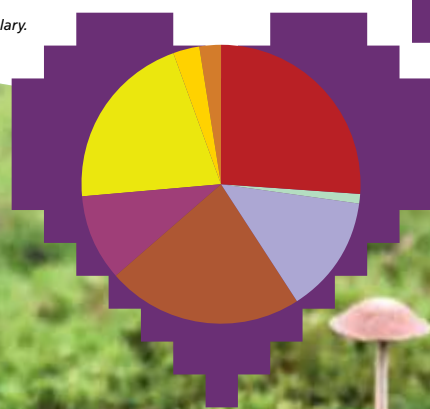
REVENUE

| | |
|---|-----------------------|
| ■ Foundations, Individuals, Schools, Scouts & Service clubs |\$199,405 |
| ■ Faith Based Partners |\$8,566 |
| ■ Business & Fundraising |\$103,264 |
| ■ Earned Revenue |\$171,530 |
| ■ Municipal |\$75,893 |
| ■ State |\$158,066 |
| ■ Federal |\$25,057 |
| ■ Client Relief |\$17,076 |
| Total revenue |\$758,857 |
| Endowment |\$39,530 |

**Program expenses include salary.*

EXPENSES

| | |
|---|-----------------------|
| ■ Early Childhood & Community Education |\$137,476 |
| ■ Youth Services |\$315,080 |
| ■ Community Services |\$199,588 |
| ■ Senior Outreach |\$94,527 |
| Total expenses |\$746,671 |



Towns Served by TEEG

- Brooklyn
- Canterbury
- Eastford
- Killingly
- Plainfield
- Pomfret
- Putnam
- Sterling
- Thompson
- Union
- Woodstock

Foundations

We gratefully acknowledge and thank the following foundations for helping TEEG meet the needs of the community.

| FUNDER | PROGRAM |
|--|--------------------------------|
| Cranston Foundation | Matching Funds |
| Eastern CT Association of REALTORS | Food Security |
| Farm Credit East Cares | General Support |
| Glass Foundation | Early Childhood |
| Governor's Partnership to Protect, dba The Governor's Prevention Partnership | Youth Services |
| Greater Hartford Community Foundation | Summer Lunch |
| The Newell D. Hale Foundation | General Support |
| McNeely Foundation, Inc. | General Support |
| NewAlliance Foundation, Inc | General Support |
| Putnam Bank Foundation | Food Security |
| The New Leaf Fund - managed by the Community Foundation of Eastern CT, Inc. | Juvenile Review Board |
| The CT Credit Union Charitable Foundation | Holiday Giving & Client Relief |
| The Osterman Family Foundation | Youth Services |
| Vincent Family Charitable Foundation | Endowment & Food Security |
| Walmart Foundation | Food Security |
| Webster Five Foundation | Food Security |
| bankHometown Foundation | Matching Funds |

Dedicated Town Funds

Residents throughout Northeast Connecticut continue to make a difference. Designated donations to the following funds have allowed TEEG to continue to serve specific local needs.

| FUND | PROGRAM | AMOUNT |
|---------------------|--|---------|
| Woodstock Fuel Fund | Fuel Assistance for Residents of Woodstock | \$4,601 |
| Thompson Fuel Fund | Fuel Assistance for Thompson Residents | \$5,000 |



Many Hearts Beating as One

The willingness of the people and businesses from the northeast corner of Connecticut to support TEEG and the many other agencies who serve our community is legendary. This perpetual generosity allows us to supplement ever-changing state and federal funding that we need to do the work we do. To echo the line from the introduction of this year's report, we cannot do it alone. YOU are a partner in our efforts and we look forward to your support, engagement, and interest in our work. Our donors and volunteers reach out in so many ways to support their neighbors through TEEG. The list is long, and our hearts are full.

Cash donations received between 7/1/2017 and 6/30/2018

The following lists recognize donors who have made financial contributions to TEEG apart from purchases made at our Have a Heart auction.

(NOTE: While we greatly appreciate the generosity of the community at our annual fundraising event, the purchase of goods and services is not recognized by general accounting practices as a donation.)

We have made every attempt to recognize everyone while respecting the anonymity of those who have asked, and sincerely hope we have not left anyone out.

TEEG Platinum Angels – \$5000 or more

bankHometown
Christ Church of Pomfret
Vincent Family Charitable FDN

TEEG Platinum Angels – \$1000 - \$4999

1st Alliance Lending, LLC
Archambault Insurance Associates
Brooklyn Cares
Chaput Electric
F.R.E.S.H. Woodstock Academy
First Congregational Church of Woodstock
Gerardi Insurance
Interfaith Human Services of Putnam Inc./Daily Bread
Killingly Parks and Recreation

Linemaster Switch Corporation
Longmeadow Automotive
Network For Good
Newell D. Hale Foundation
NUMA
Pomfret Lions Club
Pomfret School
The CT Credit Union Charitable Foundation
Thompson Lions Club
Thompson Recreation Dept.
Thompson Tractor, LLC
TMHS
Town of Woodstock Recreation Dept
UNICORR Packaging Group
United Natural Foods, Inc.
Venture Communications & Security LLC

Donors continued on next page

The TEEG Endowment

While an annual garden provides color and variety, a good gardener knows perennial plantings are the lasting foundation of an established landscape. In the same way, the TEEG Endowment serves to provide a strong, lasting foundation for our organization. We are very fortunate to have an anonymous donor who will continue to match our endowment donations, dollar for dollar, up to \$200,000.

ENDOWMENT DONORS

Linemaster Switch Corporation
Vincent Family Charitable Foundation

W.T. Rich Company Inc.
Weiss, Hale & Zahansky Strategic
Wealth Advisors
Woodstock Building Associates, LLC

PRIVATE

Joseph & Dawn Adiletta
Denise B. Archambault
Raymond & Jane Austin
Ed & Mary Lou Desaulnier
Paul & Barbara Giles
George & Sandra Groom
Rebecca Harvey
David Hetu
Col. Joel & Capt. Kathleen Hiatt
Bruce & Donna Kosa
Kevin & Diane Kozaczka
Tom Laskey
Aaron, Nicole, & Benjamin McGarry
Robert & Sylvia Miller
Jeffrey & Lindsay Paul
Paul & Louise Proffer
Mercedes Robbins
Mark & Leslee Ruggeri
Sheldon & Nancy Severs
Kevin & Linda Shaw
Bruce & Nancy Shay
Steven & Marjolaine Townsend
Taff Tschamler & Wendy Bradley
Claire Walsh
Glenn Warner & Marguerite Davis
Robert & Dolores Werge

TEEG Gold Angels – \$500 - \$999

ACO Industrial Painting, Inc.
American Truck Historical Society
C.R.F., INC.
The Center for Bone & Joint Care
Chase Graphics Inc.
Cranston Foundation
CT Area Classic T-Birds Inc.
Killingly-Brooklyn Rotary Trust

Deary's Gymnastics Supply
Elision Sound Studios
Farm Credit East Cares
Jewett City Savings Bank
Joseph Botta MD & Associates
Knights of Columbus
Living Faith United Methodist
Church
Marianapolis Preparatory School
NAPA PAP Auto Incorporated
Pomfret School
Putnam Bank
Putnam Rotary Club
Rawson Manufacturing
Spirol International
The Pomfret Proprietors Association
The Quintal Agency, Inc.
Thompson Gamblers
The Vanilla Bean Café

PRIVATE

Nancy Adams
Tom & Amy Archambault & Family
Dean & Lisa Audet
Michael & Denise Baum
Harold & Colleen Bishop
Stephen Bonner
Christopher & Patricia Burke
Bill Chaput
William & Kyra Davis
Joshua Deary
Stephen & Ellen Delpapa
Michael & Carlee Drummer
Richard & Kerstin Forrester
Chip Lamb
Samuel & Pamela Lomerson
Eric Fogg & Anne Miller
Peter & Kelly Newth
David & Linda Peiczarka
Edward Peltier
Gary Powell

James W. & Donna M. Rawson
Steve & Jen Ritzau
Bernard & Jean Rocheleau
Dan & Judy Rovero
Gerald Sullivan
Cheryl Swenson
Paul & Veronica Vaida
Elmer Wheeler & Deborah Russell
Jason & Michele Woz

TEEG Silver Angels – \$200 - \$499

BCS Company
BGR Radiator
Cargill Chevrolet Co Inc
The Christmas Barn
Church of the Good Shepherd
Wdstck
Colts Plastics Company, Inc.
Common Sense Payroll, LLC
Congregational Church of
Thompson, Inc.
Connecticut State Police Troop D
COREPLUS
Demers Enterprises LLC
E. Woodstock Congregational Church
Empire Travel
First State Corvette Club
Gates Buick GMC Nissan
H & B INC. dba Fast Track Concessions
Hatchet Hill Farm Sugar House
Kellie & Katelyn
McNeely Foundation, Inc.
MorPey, LLC DBA Body by Design
N.E. Ct Healthcare Credit Union, Inc.
New Shoreham Human Systems
Consltg, LLC
Paige Estates LLC
Putnam Police Department
Quaddick Camping Area, Inc.
Rachel Hilli Realtor
REMAX Bell Park Realty
Saveway Petroleum, Inc

South Woodstock Baptist Church
St. Onge & Brouillard
The Country Garden
Thompson House of Pizza
Titan Energy New England
Truist
WEBCO
Wilson Language Training Corp.

PRIVATE

Marc & Mary Archambault
Tracy Asikainen
Chris & Kathe Atwood
Paul Brodeur & Rachel Hilli
James & Susan Brown
Richard & Mary Jean Brown
Jack & Mary Jane Burke
John & Debra Castonguay
Beverly Champany
John Cook & Carol Mackin
Glen Dash
John & Lauren Dignam
David & Phyllis Emigh
Jerome & Diane Ethier
Elizabeth Fontaine
Dwight & Lisa French
Rene & Joanne Gatineau
John Gray
David & Susan Hall
Dale & Jean Harger
Steve & Kathleen Herbert
Tom Horn & Sue Sciaraffa
Dennis & Kathie Kelly
Ronald & Joy Klare
Kevin Lewis
Stephen & Kathleen Lewis
Nick & Louise Longo
Matthew & Margarethe Mashikian
Anthony & Jenny Mills
Richard & Kathy Naumann
Heather O'Rourke

Robert Paladino
Andrew & Susan Peterson
Barbara Pickett
David & Karen Poplawski
Christopher & Kimberly Prescott
Bob & Jo Ann Puchalski
Charles Puffer
Kevin & Frosoula Reagan
Residents of the Town of
Woodstock
Merrill & Jayne Robbins
Dan Roy, Sr.
Steven Roy
Leonard & Nancy Spooner
William & Jane St. Onge
David Stone
Lois Swenson
Phillip & Barbara Thomas
Steven & Mary Tomeo
Kent & Mary Weaver
Henry Woodbridge, Jr.
James & Melissa Zahansky

TEEG Angels – \$150 - \$199

D.H. Copeland Builders, Inc.
Jolley Concrete Inc
Kelly's Tire
Putnam Lions

PRIVATE

Steve Adams
Viola Anderson
Roger & Paul Blain
Ruth Bourassa
Ron & Yvette Brissette
Richard & Rochelle Cimochoowski
Joe & Audrey Courtney
Kieran & Sarah Cox
Bob & Cheryl Darling
Gary & Jenni Fountain
Carolyn Hart
Allen & Susan Horn

Harold & Anne Keller
Peter & Kirstin Labby
Paul & Leslie Lavallee
Peter & Virginia Lusa
Keith & Margery Mosher
Rex & Theresa Nichols
David & Pam Olson
Peter & Crista Peters
Pomfret Senior Center
Ted Reynolds
Caroline Sloat

TEEG Friends – \$100 - \$149
American Rent-All, LLC
Angell House Designs
Avena Integrative Medical
Center LLC
Business Systems & Incentives Inc.
Church Street Storage
Desmarais & Sons Inc
Desrochers General Contracting
Fabyan Farm
Gilman-Valade Funeral
Greater Hartford Community
Foundation, Inc
Gregory M. Gazzola, DMD LLC
Hibbard Hill Farm
Horizon Travel
Independent Security
IV Mechanical Contractors Inc
J & D Civil Engineers
James Scheibeler, Attorney at Law
Johnston & Associates Real Estate, LLC
Killingly Building Products
LuLa Roe Inc
Miyoshi America, Inc.
Portraits by Nan
Putnam Elks Club B.P.O.E. Lodge #574
Putnam Emblem Club #209
Quinebaug Valley Regional
Rotaract Club
Regional Team at Victoria Secret

RPC Associates, LLC
Sunrun Gardens
The Travelers Insurance Co
Thompson Public Library
Tyrone Farm
VFW Ladies Aux of Thompson
Woodstock Radiator
Woodstock Republican
Town Committee

PRIVATE

Feta & Nancy Abdullovski
Gary & Anne Alves
Daniel & Mary Atwood
Richard & Linda Auger
Dave & Peg Babbitt
Ben & Lucille Barrette
Joseph & Nancy Beaudoin
William & Debra Berube
Claude & Bernadina Bingham
J. Stuart & Miriam Boldry
Stephen & Theresa Bordua
Thomas A. & Kathy Borner
Kay Bousquet
Patricia Boutin
Robert Brewster
Shawn & Tara Brissette
Warren & Marianne Campbell
Eleanor Clark
James & Rosemarie Clark
E.L. & Nancy Cowley
Dr. Garfield &
Sylvia Danenhower, III
Monica Dean
Paul & Eileen Deary
Marie DeJesus
Andrea Delaney & Family
Leo & Shirley Demers
Ronald Desaulnier
James & Lisa Dodd
Mary Fatsi
Helen Flood

John C. Folsom
Brian & Mary Anne Fontaine
Paul & Marie Franklin
Daniel French & Judy Walberg
Jeffrey & Joslyn French
Roger & Nancy Gale
Jack H. Gibbs
Robert & Judith Giles
Ken & Barbara Goloski
Donna Grant
Kevin & Sonia Greene
Lawrence & Erica Groh
Richard & Victoria Hall
Edwin Higgins III
Linda Johnson & Edward Rose, Jr.
David Johnson
Jason & Ellen Jones
Mary Eliza Kimball
Fran Knapik
Hans & Christina Koehl
John & Kathleen Koller
Carol Kudzal
John & Judi Lachance
Lucille Langlois
Marsha Lavoie
Steven & Susan Lougee
Signe Lucas
Edward & Barbara Luther
Dorothy Maynard
Scott McGee & Amy Peltier
Anthony & Shirley Mongillo
Rene Morin & Lynne Bergeron
Peter & Donna Nalewajk
Ralph & Jane Nichols
Jim Northridge
Ernest & Norma O'Leary
Donald & Cheryl Pepek
Elizabeth Pierce-Fortin
Suzanne Powell
Patricia Prato
Cosmo & Bernadette Quercia

Jim & Rita Raftery
Karen Robbins
Dan & Tish Roy
David & Judith Rzucidlo
Karl & Betsy Salo
Christopher Sandford
Mark & Christine Schwartz
Edmond & Mary Seney
Jeremy & Nancy Serwer
Arvind & Margherita Shaw
William & Nancy Shevin
Paul & Linda Smalarz
Gary & Debra Spinelli
Patricia Spooner
John & Susan Swan
Eleanor Teguis
Van Thomas
Daniel Touchette
Lori Travers
Michael & Janene Vandt
Lynn & Donna Weaver
Robert & Carolyn Werge
Ewart John & Kathryn White
Robert & Sandra Woodrow
Richard & Paula Zadora

TEEG Good Neighbors – \$50 - \$99

Central Mass Auto Auction, LLC
Charter Oak Federal Credit Union
Curves
East Coast Video
First Impression Styling Salon
Northeast Flooring and Kitchens
Parker Memorials & Stone Co.
Sarantopoulos & Sarantopoulos LLP
Scanlon Funeral Service, Inc.

PRIVATE

Lynn Adams
Jason Allard
Julianna Altdorf & Carla Faucher
Michele Anctil

Robert & Lynn Auger
Donna Ayers-Lapointe
Helen Ballou
Tom & Natalie Beauchamp
Michelle Benton
Kevin Bernier
Robert Bitondi & Pamela Cartledge
Melissa Bonsall
Barbara Bordeaux
Kevin & Sandralee Boucher
Jeffrey Bullens
Lis Burton
Adam & Melissa Caisse
Carmen Charbonneau
Roy & Pat Cheever
Scott Cheyne
Daniel & Paula Coughlin
Walter & Denise Crabtree
Norman & Lynn Deslauriers
Ryan Desroches
Jennifer Drew
Joanne Dubois
Bruce & Kathy Elliott
Paul & Carla Faucher
Dawn Fennessy
Michael Fineran & Dayna Flath
Brian Fitzsimmons & Christine
Sullivan
Debra Gagnon
Michael Germain &
Lauri Groh-Germain
Peter Gifford
Eric & Sandy Gould
Dorothy Gregarick
Paul Grenier
Laurent & Louise Guillot
Paul & Clarice Guillot
James & Karyn Hearn
Shirley Houghton
Bruce & Sharon Johnson
Kathleen Johnson

Donors continued on next page

Jeremiah & Louisa Jones
Scott & Christina Josey
John & Amy Kacerik
Bill & Delores Kingsbury
Nicole & Josh Kinsella
John & Patricia Leahy
Peter T. Lopriore
Roland Lupien
Earl & Peggy Manz
Robert & Joan Meagher
Todd & Katrina Milanese
Dwight Mithcell
Timothy & Melita Monahan
Donald & Kathleen Morin
Richard Morse
Donald Notis
Henry & Cynthia Obert
John & Donna O'Connell
John Timothy Oliver &
Edward M. Dempsey
David & Renee Ondrasek
Charles & V. Henrietta Panu
Irene Papierski
Kip, Lisa & Brayden Paterson
Alan & Diane Patterson
Paul Peltier
Debra Persson
Wesley & Elizabeth Pettit
David & Tamsen Philippi
Douglas & Gail Porter
Toni Prentiss
James & Irene Profetto
Frederick & Barbara Rich
Gordon & Rita Rohr
James & Jeanne Sali
Steven & Paula Schimmel
Earl Semmelrock & Sarah Heminway
Lawrence F. Sommer
Francis & Maryann Spiewakowski
Myron & Nancy Stacjow

Howard Stillman
Mark Sweet
Joseph & Linda Valade
Jason & Lindsey Verraneault
Jennifer Wallace
Lloyd & Sandra Walling
Richard & Diane Weiss
Vernon & Felicia Wilson
Richard & Mary Woodcock
Yvette Zahansky
Jill Zangerl

TEEG Supporter – up to \$49

Crabtree & Evelyn
DEKCO, INC.
Eversource Energy Service Co
Jimmy's Kids Foundation
Monroe's Salon and Spa
ONEHOPE Foundation
PENOPE FARM
The Learning Clinic

PRIVATE

Barbara Adamuska
Edward Allan & Arlene Morkis
Ann Bastien
Andre & Donna Bessette
Jack & Jeanette Bibek
Michael Goudreau & Judith
Blackmore
David & Patricia Blake
Jason Bleau
Henry & Estelle Bourgeois
Earl & Beverly Brazeal
Laura Brewster
Robert Browne Jr.
John & Kathryn Casey
Richard & Joyce Conley
Laurence & Cynthia Consiglio
Edward & Darlene Danielson
Matilda Deotte

Bruce & Lisa Desmaris
Maurice Earle
Laura-Lee Edwards
Robert & Ada Egeberg
Jane Ellison
John & Theresa Evans
Kristen Finnemore
Chelsea and Mike French
Frances Gesualdi
Susan Grant
Mike Green & Amy Lusa
Brian & Theresa Hanlon
Claire Margi Heart
Kathie Hess
Nancy Hills
Mark & Therese Horvath
Jim & Brenda Houghton
Thayne & Angela Hutchins
Joseph & Valentine Iamartino
Elizabeth Johnson
Ronald & Judith Kosiba
Barbara Koza & Alyson R Aleman,
POA
Robert & Pauline LaChance
Leo LaFlamme
Paul Lajoie & Raymond Lamiotte
Louis Lane
Edward & Beverly Larson
Robert & Sandra Lekstrom
David & Linda Lucier
Kent & Susan Luman
David Lundgren
Jackie Mahoney
Kyle & Allison Manuel
Robert & Julianne Marchenonins
Margaret Martin
Keith Marvin
Frank & Joyce Mezzoni
Richard & Nancy Neal
Marian Neil

Montajeane Neil
Joan Nelson & Sue Kilborn
Paul & Carol Joy Nelson
Maureen Ritchie Nicholson
Agnes & James Oleksiak
Charles, John & Carol Parham
Emily Petrik
Robert & Marilyn Rath
Julianne Reid
Lawrence Ring & Patricia Levesque
Pamela Rosenlund
Michael Roy
Andrew & Lisa Semancik
Kenneth & Deborah Sherman
Brian Simmon & Alyssa Dziuba
Jennifer Smith
Robert & Carol Smith
Lorraine Snay
Bennett & Cheryl Stadig
Jane Staveski
Anna Surozenski
Teodor & Geraldine Teja
Sharlene Thornton
Sue Tobin
Richard & Lorraine Tremblay
Frank & Darlene Tremont
Gladys Tucker
Nanette Tummers
Peter & Jane Vercelli
Daniel & Delpha Very
Joseph & Renee Waldron
Chester & Sandra Zadora

Gifts in Memory of
Father Archambault
Lorna Boucher
Carl Charbonneau Sr.
Niles Deary
Dolores Deslauriers
Joseph Ezzell
Ryan French
Dennis Keasling
Ray Navarro Sr.
Kevin Valade
Vicki Williams

Donations Given in the Name of

Rodney & Michelle Barber
Kevin Bergeron
Susan Brown
Maria Carpenter
Joel Champagne
Laura-Lee Edwards
Paul & Mary Gallerani
Patricia Gates
Eric & Sandy Gould
Raymond Gould
Donna Grant
Laurence Hale & James Zahansky
Steve & Kathleen Herbert
Dennis & Kathie Kelly
Kevin & Diane Kozaczka
Kim Nowell
Chandler & Heather Paquette
Jordan Quintal
Ronald Szymanski & Suzanne Cross
Allan & Carrie Walker
Curtis & Kathy Young
Douglas & Donna Young
Timothy & Wendy Young

Color Us Happy

TEEG is forever grateful to the many dedicated volunteers and supporters who help us spread gratitude by donating their time and talents.

LEGEND

🕒 = Volunteer to TEEG

❤️ = Donor to Have a Heart Charity Auction

👤 = In-Kind Donors

85 Main- JAMBRIBAR, LLC ❤️
A Block Away ❤️
Acts II Youth Group 👤
Aislings Cookies ❤️
American Girl ❤️
Ananda Yoga Studio ❤️
Angell House Design 👤
Archambault Insurance Associates 👤
Aubin & Sons Plumbing & Heating ❤️
Avena Integrative Medical Center LLC ❤️
B.F. Grant Photography 👤
Bakers Dozen Pomfret ❤️
bankHometown 👤
Ben's Beans ❤️
Beth Benoit Photography ❤️
Black Hawk II ❤️
Blithewold Mansions ❤️
Bloom on the Hill ❤️
Borner, Smith, Aleman, Herzog & Cerrone LLC ❤️
Boston Bruins/Boston Professional Hockey Association, Inc ❤️
Boston Celtics Community Relations ❤️
Boston Red Sox Community Relations ❤️
Bousquets Appliances 👤
Boy Scout Troop 21 👤
Bungay Fire Brigade 👤
Cableworks, Inc. ❤️

Cargoclaimsphotos@crengland.com 👤
Chace Building Supply of CT, Inc. ❤️
Chase Graphics Inc. ❤️ 👤
Christ Church of Pomfret ❤️
CoCo's Cottage ❤️
Community Fire Department 👤
Congregational Church of Thompson, Inc. 👤
Connecticut National Golf Club ❤️
Crabtree & Evelyn ❤️ 👤
Creation Church 👤 🕒
Crete/Shaffer 👤
CSEA Chapter 412 👤
Cub Scout Pack 66 Boy Scout Troop # 66 👤
Custom Curved Molding ❤️
Daisy and Brownies Troop #65217 🕒
Danielson Surplus Sales Inc. ❤️
Dan Landry Electric Inc ❤️
Daughters of Isabella 👤
Dave and Buster's Providence ❤️
Davis Farmland & Mega Maze ❤️
Day Camp @ Rectory School 🕒
Dell/EMC Logistics 🕒
Disney ❤️
Dogs by Design Day Spa ❤️
E. Woodstock Congregational Church 👤 🕒
Earthworks ❤️
EcoTarium ❤️
Elision Sound Studios 👤
Eye Care Northeast PC ❤️
Fabyan Farm 👤
Finally Lisa's ❤️
First Congregational Church of Woodstock 👤
Floki Hair ❤️

Garden Gate Florist ❤️
Ginger Photography 👤
Girl Scouts Wolf Den Service Unit 👤
Go Bare Aesthetic Studio ❤️
Green Valley Crossing 🕒
Grill 37 ❤️ 👤
H & B INC. dba Fast Track Concessions ❤️
Hank's Restaurant ❤️
Harrisville Golf Course ❤️
HHCMG Putnam Cardiology 👤
Hindsight Farm 👤
His Oaks Ministry 🕒
Hull Forest Products ❤️
Hush Little Baby Cakes ❤️
IC Optics ❤️
Imagination Station Day Care 👤
The Inn At Woodstock Hill 👤
Interfaith Human Services of Putnam Inc./Daily Bread 👤
Jessica Tuesday's ❤️
Kellie & Katelyn 👤
Kid City ❤️
Killingly Parks and Recreation Dept. ❤️ 👤
King Cadillac, GMC ❤️
Knights of Columbus 👤
L.B.'s Family Restaurant, Inc. ❤️
La Gondola Providence Inc ❤️
LaDonna's ❤️
l'Apres Midi Club 👤
Launch Trampoline Park ❤️
Legoland ❤️
Lindsay Shaw Photography 👤
Lock'd Escape Adventures ❤️
Long Wharf Theatre ❤️
Mackeys ❤️
MAD Communications 👤

Mad Dog's Arcade and Game Lounge ❤️
Main St Grille ❤️
Mansion at Bald Hill ❤️
Marianapolis Preparatory School ❤️ 👤
Mary R. Fisher Elementary Faculty & Staff 👤
Mary R. Fisher Elementary School Students 👤
Medline 👤
Melissa Zahansky's 4th Grade class at Rectory School 👤
Midtown Fitness Center ❤️
Mohegan Sun ❤️
Mom's Group of Woodstock 👤
MorPey, LLC DBA Body by Design ❤️ 👤
Most Holy Trinity Church 👤
Muddy Brook Fire Dept., Inc. 👤
Mystic Aquarium ❤️
NAPA PAP Auto Incorporated 👤
Network, Inc. 👤
New Boston Beef LLC 👤
New England Patriots ❤️
New York Giants ❤️
New York Jets ❤️
Nichols MBA Program 👤
No Knot Sense Massage ❤️
Northeast Connecticut Dental Associates ❤️
Northeast Opportunities for Wellness, Inc 👤
Not Your Average Play Date of Thompson 👤
Old Sturbridge Village ❤️
Our Father's Table 👤
Panera Bread 👤
Peter's Landscaping 👤
Periwinkles ❤️

Pizza 101 ❤️
Place Motors 👤
Pomfret Agricultural Commission 👤
Pomfret School ❤️ 👤 🕒
Pomfret School Arts Department 👤
Pomfret Wine and Spirits ❤️
Providence Bruins ❤️
Putnam Ford & Mercury, Inc. ❤️
Putnam Helping Hands Transition Program 🕒
Putnam Interact Group 👤
Putnam EMS 👤
Putnam Fire Department 👤
Putnam Rotary 👤
Quaddick Camping Area, Inc. 👤
Quaddick Country Store ❤️
Quiet Corner Acupuncture ❤️
Quiet Corner Consulting 👤
Quiet Corner Grooming ❤️
Quiet Corner Self Storage 👤
Rawson Materials ❤️
Refuge Salon ❤️
Residents of the Town of Woodstock 👤
Rite Aid Distribution Center 👤
Salem Wax Museum ❤️
Salem Witch Museum ❤️
Savage Systems ❤️ 👤
Saveway Petroleum, Inc 👤
Sawmill Pottery ❤️
Skydive Danielson ❤️
Solair Recreation 👤
Soleil & Suns Bakery LLC ❤️
Southwick's Zoo ❤️
Sprucedale Gardens Nursery & Greenhouse ❤️
St. Joseph's Church 👤
Staples Distribution Center 👤

Stone Age Rock Gym ❤️
Storrs Adventure Park ❤️
Sweet Evalina's ❤️👤
Sweet Peas ❤️
Taylor Brooke Winery ❤️
The Crossings Restaurant & Brew Pub ❤️
The Farmer's Plate 👤
The Stomping Ground ❤️
Thompson Business Association 👤
Thompson Community Art Show Committee 👤
Thompson Congregational United Church of Christ 👤
Thompson International Speedway LLC ❤️
Thompson Lions Club 👤
Thompson Middle School Honor Society 👤
Thompson Middle School PTO 👤
Thompson Public Library 👤
Thompson Public School 👤
Thompson Recreation Dept. 👤
Tourtellotte Memorial High School 👤
Tourtellotte Memorial High School Student Council 🕒
Town of Thompson 👤
Tractors 2 Trimmers LLC ❤️
Travelers Shell ❤️👤
Triple C Cakes ❤️👤
Triple T Transport 👤
Tri State Crossfit ❤️
Twigs and Pearls ❤️
United States Post Office 👤
Urban Aviation Services Inc ❤️
Vanilla Bean Café 👤
Venture Communications & Security LLC ❤️
W.B. Mason ❤️
Wags to Whiskers ❤️
WEBCO ❤️
Webster Muscular Therapy ❤️
Weiss & Hale Financial ❤️👤🕒

Windham Tolland Counties Ret. Teachers 👤
WINY Osbrey Broadcasting Company ❤️👤
Woodstock Academy ❤️👤🕒
Woodstock Academy Women's Hockey 🕒
Woodstock Elementary School 👤
Woodstock Evangelical Covenant Church 🕒
Woodstock Fire Depts & Community Station 81 👤
Woodstock Academy-F.R.E.S.H. 👤🕒
Woodstock Town Hall 👤
Woolworks ❤️
Worcester Railers ❤️
YMCA ❤️
YMCA Camp Woodstock ❤️
Zion Lutheran Church of Oxford 👤

PRIVATE

Lorrie Adams 🕒
Nancy Adams 👤
Deborah Angell 🕒
Denise B. Archambault 👤
Tom & Amy Archambault & Family ❤️🕒
Chris & Kathe Atwood 👤
Jamie Aubin 👤
Raymond & Jane Austin 👤🕒
Joseph Baker 👤
Chris & Kelly Baranski 👤
Rodney & Michelle Barber 👤
Mason Barber 🕒
Richard Barker 👤
Rebecca Barry ❤️
Rita Barthelet 🕒
Kristy Barthelet 🕒
John, Kandyse, Morgan Bassett 👤
Ann Bastien 👤
Audray Bastien 🕒
Jennifer Baublitz 👤
Michael & Denise Baum ❤️
Rick, Laurie & Mike Belinski 👤

Noveline Beltram ❤️
Dave and Liz Benoit 👤
Layla Benoit 👤🕒
Kevin Bergeron 👤
Peg Bernat 👤
Randolph & Myrtie Blackmer 👤
David & Patricia Blake 👤🕒
Jason Bleau 👤
J. Stuart & Miriam Boldry 👤
Geoffrey & Jessica Bolte 👤
Elena & Jeff Bond 👤
Morgan Bonin 👤
Mirabella Bonnette 👤
Ashley & John Bouchard 👤
Kathleen Brainerd 🕒
Paul Brodeur & Rachel Hilli ❤️
Mary Buckley 🕒
Lynn Burdick 👤
Christopher & Patricia Burke ❤️🕒
Karena Burnham 👤🕒
Rachel Calderon 🕒
Maria Carpenter 👤
Stephen & Tina Chahanovich ❤️
Joel Champagne 👤
Carmen Charbonneau 👤
Daniel Charest 🕒
Christine Chatelle 🕒
Roy & Pat Cheever 👤
Paul & Patricia Chenail ❤️
Jo-Ann Chenail 🕒
Craig & Mary Cheyne ❤️
Rande Chmura 👤🕒
Won Lee Cho 🕒
Carol Coffin 👤
Rene & Lynne Comtois ❤️👤🕒
Laurence & Cynthia Consiglio ❤️👤
John Cook & Carol Mackin 👤
Ernest & Estelle Coutu 👤
Laura Crosetti & Linda Colangelo ❤️
Allison Congdon 🕒
Barbara Cunha 👤
Lisa & Frederick Day-Lewis 👤
Gene Michael Deary 👤🕒

Steve Delpapa 🕒
Carla Demers 👤
Tina Desabota 👤
Norman & Lynn Deslauriers 👤
Jaime & Maite Dickinson 👤
Steven Dickson 👤
Lee Durbin 🕒
Sara Dzedzek 👤
Laura-Lee Edwards 👤
Carole Ekholm 👤
Khaled & Maria El-Samin 👤
David & Phyllis Emigh 👤
Jeffery Ezzell 👤
Anna Farland 🕒
Dawn Fennessy 👤
John & Kim Flynn ❤️👤
Brian & MaryAnne Fontaine 👤
Christina Fontaine 🕒
Carrie Forget 👤
Kerstin Forrester 🕒
Gary & Jenni Fountain ❤️👤
Joe & Melissa Fountain 👤
Jeffrey & Joslyn French 👤
Mary Freudenthal 👤
Paul & Mary Gallerani 👤
Patricia Gates 👤
Frederick & Joan Gaucher 👤
Amy, Allie Rose, Elizabeth, and Adam LaChance 👤
Paul & Barbara Giles 👤
Ken & Barbara Goloski ❤️
Eric & Sandy Gould 👤
Raymond Gould 👤
Gabriel Grant 🕒
Donna Grant ❤️👤
Jennifer Green 👤
Paul Grenier 👤
Lawrence & Erica Groh ❤️👤🕒
Gary & Laurie Guay 👤
Melanie Hachiglam 👤
Betty Hale 👤
JoAnn Hall 🕒
Ethan Hall 🕒

Noah Hall 🕒
Lori Hall 🕒
Sylvia Hanshaw 👤
Garret Happert 👤
Colin Healey 👤
Mike & Sarah Healey 👤
Sandra Hebert 👤
David Henriques ❤️
Steve & Kathleen Herbert 👤
Kristian Hernandez 👤
Michael Hibbard 🕒
Bryant Hibbard 🕒
Colin Hill 👤
Wallace Holder 🕒
Helen & Clarence Hopkins 🕒
Mr. & Mrs. Horsfield 👤
JP Jacquet ❤️
Michael Jezierski ❤️
Elizabeth Johnson 👤
Sandra Johnson 👤
Jason & Ellen Jones ❤️
Scott & Christina Josey 👤
Roy Karlsen 👤
Kathy Keasling 👤
Dennis & Kathie Kelly 👤
Katelyn Kennedy 🕒
Nicola Khrzanowski 👤
Danielle Kiser 👤
Kevin & Diane Kozaczka 👤
Ron & Anne Marie LaFond ❤️
Jessica & Ronald Lamontagne 👤
Nancy Lamontagne 👤
Dan Landry ❤️
Lisa Langelier 👤
Miranda Laperle 👤
Paul & Leslie Lavallee 👤
Brandon Lemire 🕒
Augustus & Gunnar Lewis 👤
Robbie L'Heureux 👤
Peter & Virginia Lusa ❤️👤
Barbara Lussier ❤️
James Machamer 👤
Kent Madden 🕒

Jackie Mahoney ♥
 James Marchand 🕒
 Beverly Marshall 🕒
 Bill Martin 🖐️
 April Martin 🕒
 Colleen Massey 🕒
 Sam Massey 🕒
 Jocelyn Mathewson 🕒
 Chris Mayo, Sr 🖐️
 The McGlynn Family 🖐️
 Robert & Joan Meagher 🖐️
 Stasia Menard 🖐️
 Pauline Menoche ♥
 Elena Mercier 🖐️
 Michael Merrill 🕒
 Robert & Sylvia Miller 🖐️
 Eric Fogg & Anne Miller ♥ 🖐️
 Crystal Monaco 🖐️
 Joel Monahan 🕒
 Robert Monahan 🕒
 Tristan Monahan 🕒
 Rene Morin &
 Lynne Bergeron ♥ 🖐️ 🕒
 Corey Morrison ♥
 Cathy Moulton 🖐️
 Chris & Amy Murphy 🖐️
 Rebecca Murphy 🖐️
 David Nesanelis 🖐️
 Rex & Theresa Nichols 🖐️
 Damian Bonneau Nichols 🕒
 Debra Noble 🕒
 Kim Nowell 🖐️
 Anne Nyland 🖐️
 David & Pam Olson ♥ 🕒
 Haylee Olson 🖐️
 Tim & Michelle O'Sullivan 🖐️
 Heather O'Rourke 🖐️ 🕒
 Robert Paladino 🖐️
 Irene Papierski 🖐️
 Chandler & Heather Paquette 🖐️
 David & Linda Peiczarka ♥ 🖐️
 Elizabeth Perry 🕒
 Debra Persson 🖐️

Peter & Crista Peters ♥ 🕒
 Joey Pezzano 🕒
 Lisa Phelps 🖐️
 Stephen Picciano 🖐️
 Barbara Pickett 🖐️
 Roy & Elizabeth Piper ♥
 David & Karen Poplawski ♥
 Ellen Pratt ♥
 James & Irene Profetto ♥
 Mark & Jane Provost ♥
 Kenneth Przystas 🕒
 Sheri Putnam ♥
 Luann, Michael & Patrick Quaiel ♥
 Jordan Quintal 🖐️
 Ida J. Ransom ♥ 🖐️
 James W. & Donna M. Rawson ♥
 Jessica Rawson & Megan and
 Matthew Bates 🖐️
 Diane Rees 🕒
 Ellen Rewinski 🖐️
 Diane Ricciard 🖐️
 John Rice 🖐️
 Anne Richards 🕒
 Mercedes Robbins ♥
 Merrill & Jayne Robbins 🖐️ 🕒
 Isabel Rodriguez 🕒
 Megan Romprey 🖐️
 Kim & Earl Rosebrooks 🖐️
 Keri Roy 🖐️
 Mark & Leslee Ruggeri ♥
 Mariangela Ruggeri 🕒
 Monique & Raymond Ryan 🖐️
 John Sacramone 🖐️
 Edmond & Mary Seney 🖐️
 Peter & Carol Sepowitz 🖐️
 Kevin & Linda Shaw ♥ 🖐️ 🕒
 Kelly Sheehan ♥
 Dave & Laura Serrine 🖐️
 Summer Slanda 🕒
 Caroline Sloat 🖐️
 Cathy Smith 🕒
 Timothy & Shaina Smith 🖐️
 Beatrice Sponcey 🖐️

Suzanne St. Onge 🕒
 Ann St. Onge 🕒
 Adam Squire 🖐️
 Ashley Stanley 🖐️
 Cam Stewart 🕒
 Ronald Szymanski &
 Suzanne Cross 🖐️
 The Torres Family 🖐️
 Robin Tracy 🖐️
 Jon & Keri Tremblay 🖐️
 Nicholas Trudeau 🕒
 Taff Tschamler &
 Wendy Bradley ♥ 🖐️
 Michael & Alecia Underhill ♥
 Alexandra & Abby Vaida 🖐️
 Michael & Janene Vandi 🖐️
 Daniel & Delpha Very ♥
 Juliann Vose 🕒
 Carolyn Wagner ♥
 Allan & Carrie Walker 🖐️
 Hailey Walker ♥
 Jeff & Danielle Wallace ♥
 Terry Walsh 🖐️
 Richard & Diane Weiss 🖐️
 Dolores Werge 🕒
 Debra White 🖐️
 Kristina Williams 🖐️
 Margaret Williams 🕒
 Brad Worden 🕒
 Curtis & Kathy Young 🖐️
 Douglas & Donna Young 🖐️
 Rose Young 🕒
 Timothy & Wendy Young 🖐️
 Yuni 🖐️
 Victoria Zadora 🕒
 Melissa Zahansky 🖐️
 Jill Zangerl 🖐️

Acknowledgements

We are once again filled with gratitude for the gifts of creativity given by our volunteer marketing team. Thank you to Mary Ann and Kyle Dostaler of MAD Communications, Laura Moorehead of Angell House Design, Branden Grant and Bob Daniels of B.F. Grant Photography, and Lindsay Lehman of Lindsay Shaw Photography for donating your time and talents for the 2018 Annual Report. We are deeply grateful for all that you do.

Our thanks also go out to Chase Graphics for their generosity and the many services they provide to our agency throughout the year, including their partnership in producing this report.



What are you grateful for?

The TEEG Mission

Empowering individuals to live independently
Strengthening families to live respectfully
Engaging the community to work collaboratively
Connecting resources to promote a better future for all

If you could benefit from any of the programs or services in this report, please call the TEEG office.

TEEG

P.O. Box 664
15 Thatcher Road
North Grosvenordale, CT 06255
Phone: 860-923-3458
Fax: 860-923-5770
Visit our new website at
www.teegonline.org

© 2018 TEEG. All Rights Reserved.

